



## Konica Minolta Optimized Network Assessment

Have you ever wondered about the health and well-being of your network infrastructure? Today, more and more devices are leveraging the communications abilities of your corporate network. It's not just servers and computers, but also phones, copiers, scanners and even wireless devices and employee owned tablets and mobile devices. Each of these devices bring business benefits to your company but they also bring risks such as viruses, bandwidth usage, resource consumption and the possibility of intrusion from outsiders.

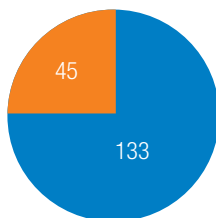
# Stay healthy.

To help you better understand the current health of your network and to make informed decisions about needed changes, Konica Minolta, through its All Covered IT Services division, is pleased to offer an Optimized Network Assessment. Think of it as an annual physical examination for your business technology.

## Windows Operating System Environment Analysis

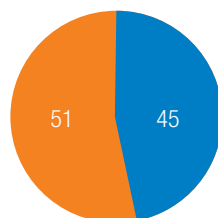
We'll assess and document the current status of Microsoft Windows servers and client workstations. Our assessment includes verification of Windows Service Packs and eligibility for patching. This is the first step in identifying outdated systems which can lead to compromises in security. Additionally, we verify Windows Active Directory logins to ensure that user accounts are not being used for malicious activity.

Active Directory Users



■ Number of users never logged in  
■ Number of users login > 90 days

Active Directory Computers

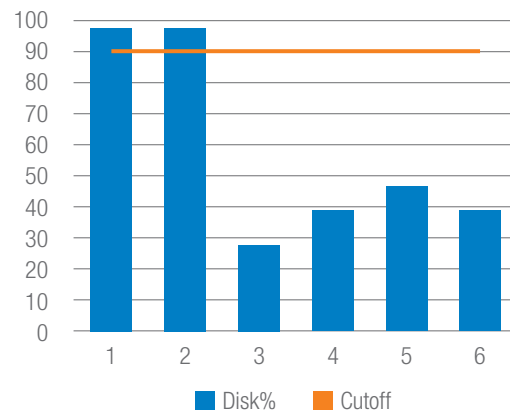


■ Number of computers logged in more than 90 days ago  
■ Number of active computers

## Resource Utilization

Our assessment performs usage and performance testing on key resources such as bandwidth, disk space and memory. Many applications, especially older line of business applications, can inefficiently use disk and RAM and thus prevent other services and applications from having access to these resources. Additionally, we can provide insight into resources utilization that can impact future performance.

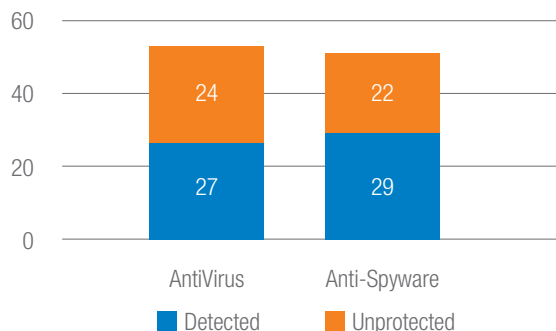
Server Root Driver Capacity Utilization

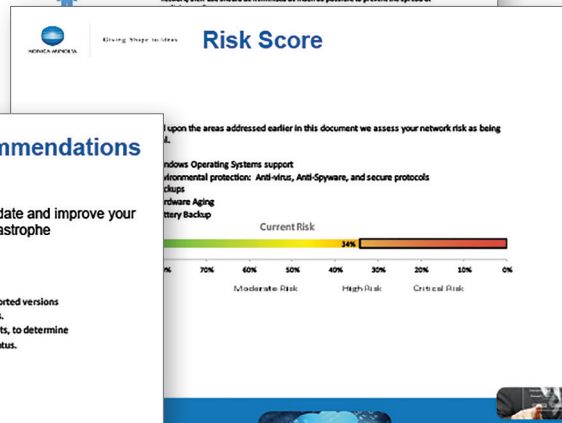
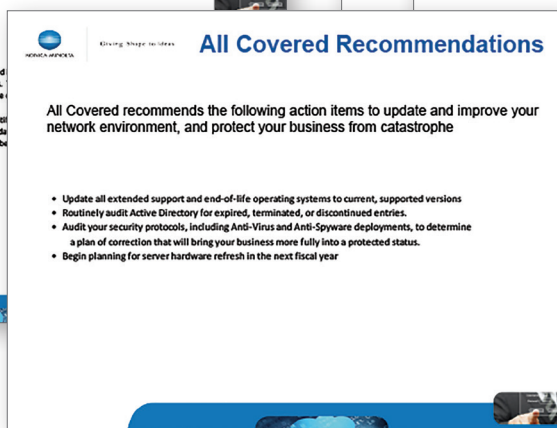
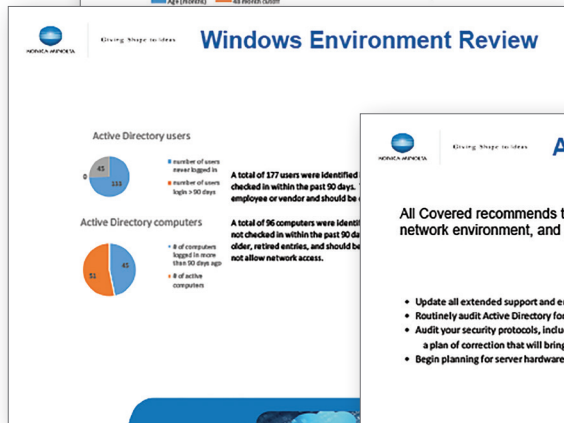
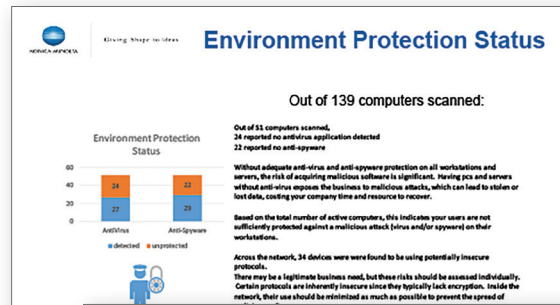
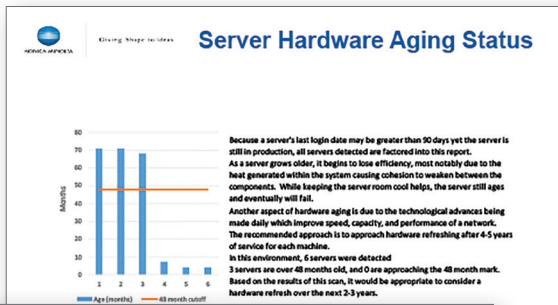


## Environmental Protection Status

One of the biggest threats to your corporate data and network resources comes from virus and malware attacks via email and the web. Failure to keep anti-virus solutions up-to-date can expose your organization to new and emerging threats. Our assessment evaluates and reports on the current anti-virus protection status for both servers and workstations. The All Covered Network Assessment reduces risks from outdated security solutions.

Environment Protection Status





## How it works.

Our assessment is performed by running a small software program in your network environment. The software runs in the background of day-to-day tasks without compromising system performance. The data is collected by our engineering team and analysis is performed by the assessment tools. After our assessment is performed, you will receive a detailed report including the following:

- An overall view of your Windows environment
- Anti-Virus and Anti-Malware status
- Disk space utilization status
- Server and workstation aging status
- Security and performance issues discovered and level of associated risk
- Recommendations to remediate identified risks and issues

Additionally, our engineering team will schedule a remote meeting with you to personally review the report findings and to highlight any areas of concern. We'll take the time to discuss each item, confirm our recommendations and document a plan of action.



## Benefits.

With a current report of overall network and systems health, you are now equipped to address potential threats to network stability and performance before they negatively impact productivity and performance. Having a customized report with recent data from your environment allows you to prioritize your IT spend where it will do you the most good, rather than blindly spending on upgrades and solutions that are unlikely to bring the desired results.

### All Covered

All Covered, the IT Services division of Konica Minolta, is one of the nation's leading providers of managed IT services, cloud computing services and application development solutions. Our team of over 800 engineers have experience and certifications in the industry's latest technologies. Let our team of technical experts help you identify potential threats and optimize your network infrastructure to get the most from your technologies.



## PARTNERSHIP.

Konica Minolta can help give shape to your ideas and partner with you to achieve your corporate objectives. Contact us to realize opportunities in:

### INFORMATION MANAGEMENT

- Enterprise Content Management (ECM)
- Document Management
- Automated Workflow Solutions
- Business Process Automation
- Security and Compliance
- Mobility

### IT SERVICES

- Application Services
- Cloud Services
- IT Security
- Managed IT Services
- IT Consulting & Projects

### TECHNOLOGY

- Office Multifunction Business Solutions
- Commercial and Production Printers
- 3D Printers
- Wide Format Printers
- Laptops, Desktops, Computer Hardware
- Servers and Networking Equipment
- Managed Print Services (MPS)
- Facilities Management

Contact All Covered Toll-Free Nationwide at [866-446-1133](tel:866-446-1133) or visit [www.AllCovered.com](http://www.AllCovered.com)

© 2016 KONICA MINOLTA BUSINESS SOLUTIONS U.S.A., INC. All rights reserved. Reproduction in whole or in part without written permission is prohibited. KONICA MINOLTA, the KONICA MINOLTA logo, Count On Konica Minolta, bizhub, and Giving Shape to Ideas are registered trademarks or trademarks of KONICA MINOLTA, INC. All other product and brand names are trademarks or registered trademarks of their respective companies or organizations. All features and functions described here may not be available on some products.



**KONICA MINOLTA**

**KONICA MINOLTA BUSINESS SOLUTIONS U.S.A., INC.**  
100 Williams Drive, Ramsey, New Jersey 07446

[CountOnKonicaMinolta.com](http://CountOnKonicaMinolta.com)



Item #: ACOptiNetAssess  
5/16-L